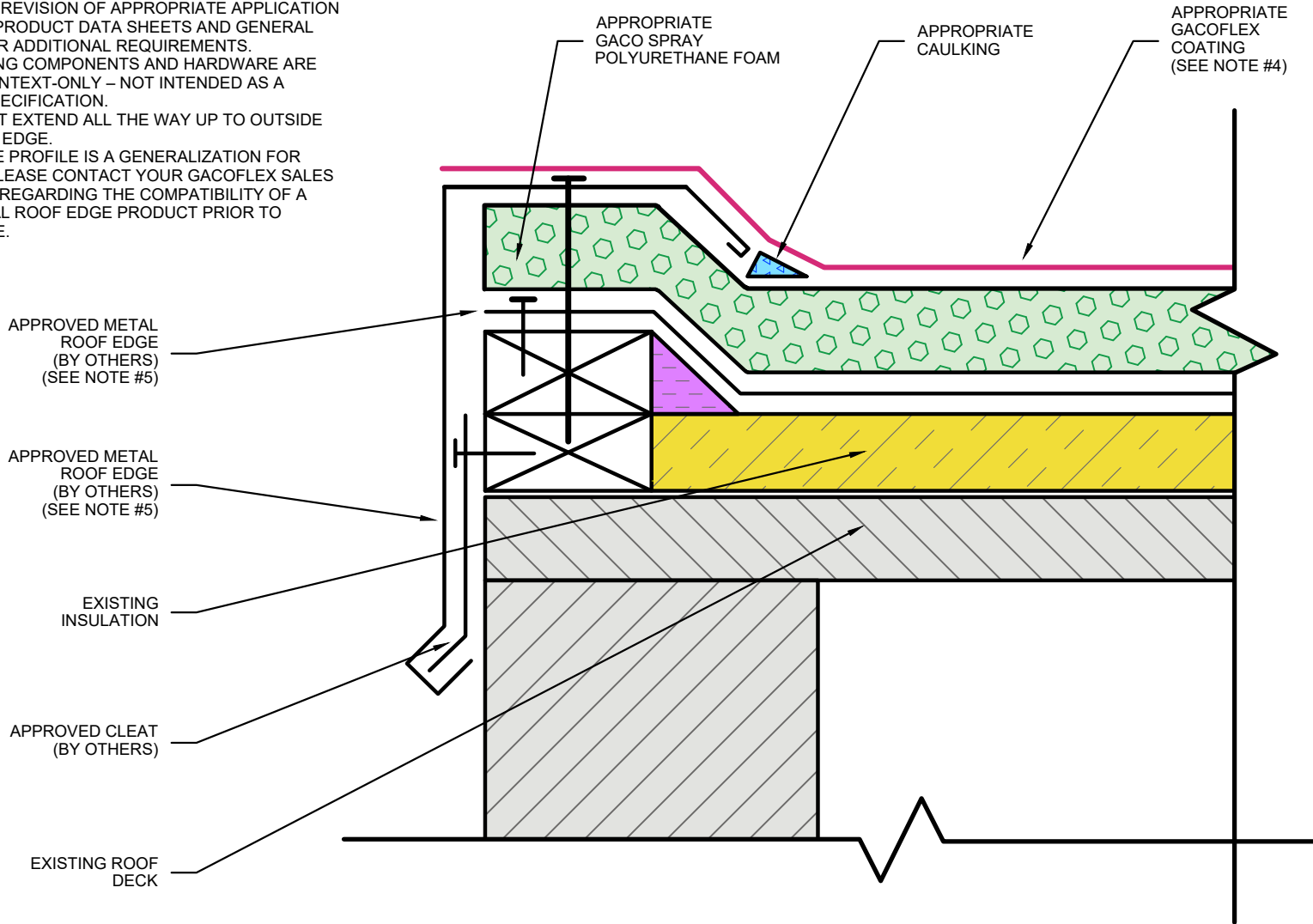


NOTE:

1. FOR GENERAL REFERENCE ONLY – NOT INTENDED FOR PROJECT-SPECIFIC USE OR TO FULLY DEFINE A WARRANTY ELIGIBLE APPLICATION.
2. REFER TO LATEST REVISION OF APPROPRIATE APPLICATION SPECIFICATIONS, PRODUCT DATA SHEETS AND GENERAL INSTRUCTIONS FOR ADDITIONAL REQUIREMENTS.
3. NON-GACO ROOFING COMPONENTS AND HARDWARE ARE DEPICTED FOR CONTEXT-ONLY – NOT INTENDED AS A STATEMENT OF SPECIFICATION.
4. APPLICATION MUST EXTEND ALL THE WAY UP TO OUTSIDE CORNER OF ROOF EDGE.
5. METAL ROOF EDGE PROFILE IS A GENERALIZATION FOR CONTEXT ONLY. PLEASE CONTACT YOUR GACOFLEX SALES REPRESENTATIVE REGARDING THE COMPATIBILITY OF A PARTICULAR METAL ROOF EDGE PRODUCT PRIOR TO PURCHASE OR USE.



Gaco™

ROOF EDGE (PROFILE 1) – SPF & COATING

MAXIMUM WARRANTY TERM:
REFER TO APPROPRIATE APPLICATION SPECIFICATIONS

GACOFLEX™ COATING SOLUTIONS CATEGORY:

ROOF SYSTEM (RS)

COMPATIBLE SUBSTRATE TYPES:

REFER TO APPROPRIATE APPLICATION SPECIFICATIONS

REVISION DATE:
01/16/2022

DETAIL NO.
GA-RS-T-4

ADDITIONAL TECHNICAL DOCUMENTATION AVAILABLE ON GACO.COM | CUSTOMER SERVICE - PHONE: (800) 331-0196 / E-MAIL: CUSTOMERSERVICE@GACO.COM

NOT TO SCALE